



Molecular test in 30 min.
Anytime. Anywhere.

CLEO™ ONE



EASY



FAST



COMPACT

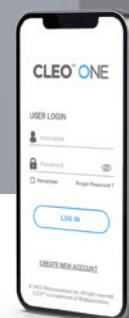


FLUORESCENCE



ACCURATE

Innovative microfluidic and fluorescent-LAMP technology enable CLEO™ ONE to provide fast and laboratory-level test result.



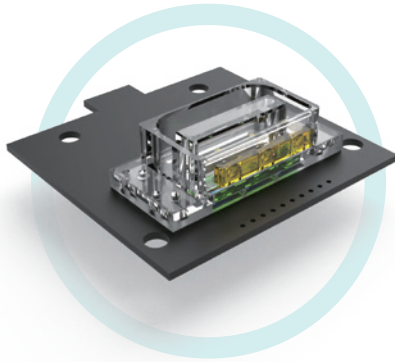
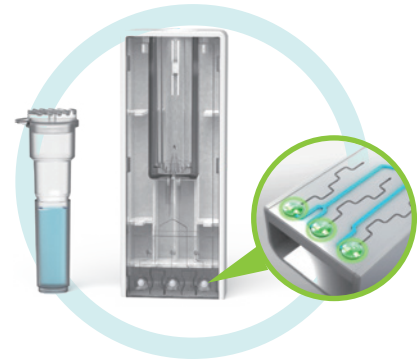
CLEO™ ONE App.

Precise Controlled Microfluidic Technology

The Precise Controlled Microfluidic (PCM) technology enables non-experts to perform point-of-care molecular self-tests.

PCM technology can automatically transport the sample to the reagent chamber without relying on electrical or mechanical processes. It also minimizes volume deviation between tests by controlling liquid flow within an error range of 1 μ L.

Additionally, PCM technology inherently prevents external contamination, ensuring high accuracy and reproducibility.



Versatile Fluorescence Sensing Technology

Versatile Fluorescence Sensing (VFS) technology enhances molecular diagnosis accuracy by reading fluorescence signals on a compact device. VFS can precisely measure fluorescence intensity from reaction chambers and perform real-time multiplex analyses of these signals.

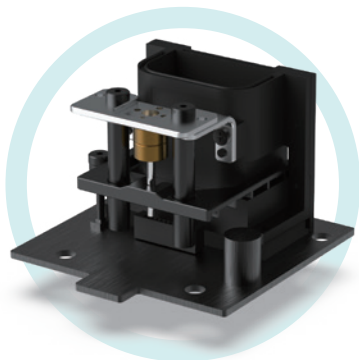
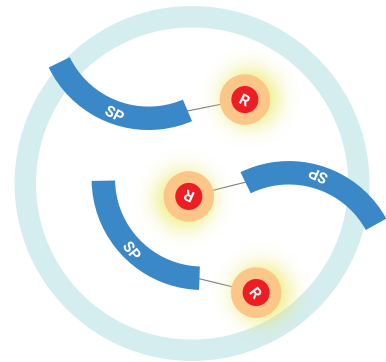
This technology can improve point-of-care and self-test quality, achieving sensitivity and specificity comparable to high-performance laboratory tests.

Accurate & Early Detection Technology

CLEO™ONE with patented "Switching-Probe™ Technology" provides early and specific detection for respiratory virus at low viral loads.

Switching-Probe™ technology can selectively detect target genes using a specially designed fluorescent probe to achieve specificity and sensitivity equivalent to real-time PCR.

Switching-Probe™ technology solves the false-positive problem caused by non-specific amplification observed in isothermal amplification technology. In addition, this technology can detect multiple genes simultaneously.



Multiplex Fluorescence Analysis Technology

Multiple fluorescence analysis in POC molecular diagnostic devices.

An ultra-small multiplex fluorescence molecular diagnostic platform technology based on isothermal amplification.

Simultaneous detection of two types of fluorescence within a single reaction chamber enables the simultaneous analysis of up to six genes.

Quick and Easy Test Protocol



Clear & Comprehensive

Intuitive result reports are listed and shown as below images. It provides results in the same format as real-time PCR.

TEST LISTS

User ID	Date	Test Item	Test Result	Device ID
12	07.MAR.2023	COVID-19	NEGATIVE	#10-Ba1-00002
44	07.MAR.2023	COVID-19	POSITIVE	#10-Aa1-70004
19	07.MAR.2023	COVID-19	POSITIVE	#10-Ba1-00001
5	03.MAR.2023	COVID-19	POSITIVE	#10-Ba1-00005
4	03.MAR.2023	COVID-19	POSITIVE	#10-Aa1-70004
3	03.MAR.2023	COVID-19	POSITIVE	#10-Ba1-00003
2	03.MAR.2023	COVID-19	POSITIVE	#10-Ba1-00002
1	03.MAR.2023	COVID-19	POSITIVE	#10-Ba1-00001
5	03.MAR.2023	COVID-19	POSITIVE	#10-Ba1-00005
4	03.MAR.2023	COVID-19	POSITIVE	#10-Aa1-70004

Test lists



Detailed test result

Innovative Point-of-care Molecular Diagnostic Platform



Multiple test up to 10 devices

CLEO™ ONE can test up to 10 devices simultaneously with one app through Bluetooth connection.



Easy & quick sample preparation

Using a uniquely structured test cartridge, sample preparation becomes straightforward and quick, making it ideal for point-of-care diagnosis.



Product Specifications

Product	CLEO™ ONE	CLEO™ ONE m
Test capacity	1 test (3-target gene)	1 test (6-target gene)
Weight	165g (5.8 oz)	250g (8.8 oz)
Dimensions (L×W×H)	2.8"x2.8"x4.1" (72×72×104 mm)	
Power supply	110 - 240V, 50/60Hz, 2A	
Operating system	Android OS, iOS	
Place of use	Hospital, Clinic, Lab., Veterinary, Food industry, etc.	
Test Items	COVID-19, Respiratory, STI, Food pathogen, Animal, Plant, etc.	

Ordering Information

Product	Cat No.	Package
CLEO™ ONE	CL0001P1	1 set
CLEO™ ONE m	CL0001P1m	1 set



A-1806, Woolim Lions Valley 2
Sagimakgol-ro 45beon-gil 14,
Jungwon-gu, Seongnam-si, Gyeonggi-do
13209 Republic of Korea

www.wizbiosolution.com
support@wizbiosolution.com
+82 70 7605 5066

